



Shoviv EML Converter



**Shoviv EML Converter - Convert in PST, Live Exchange,
Office365, MSG**



Table of Contents

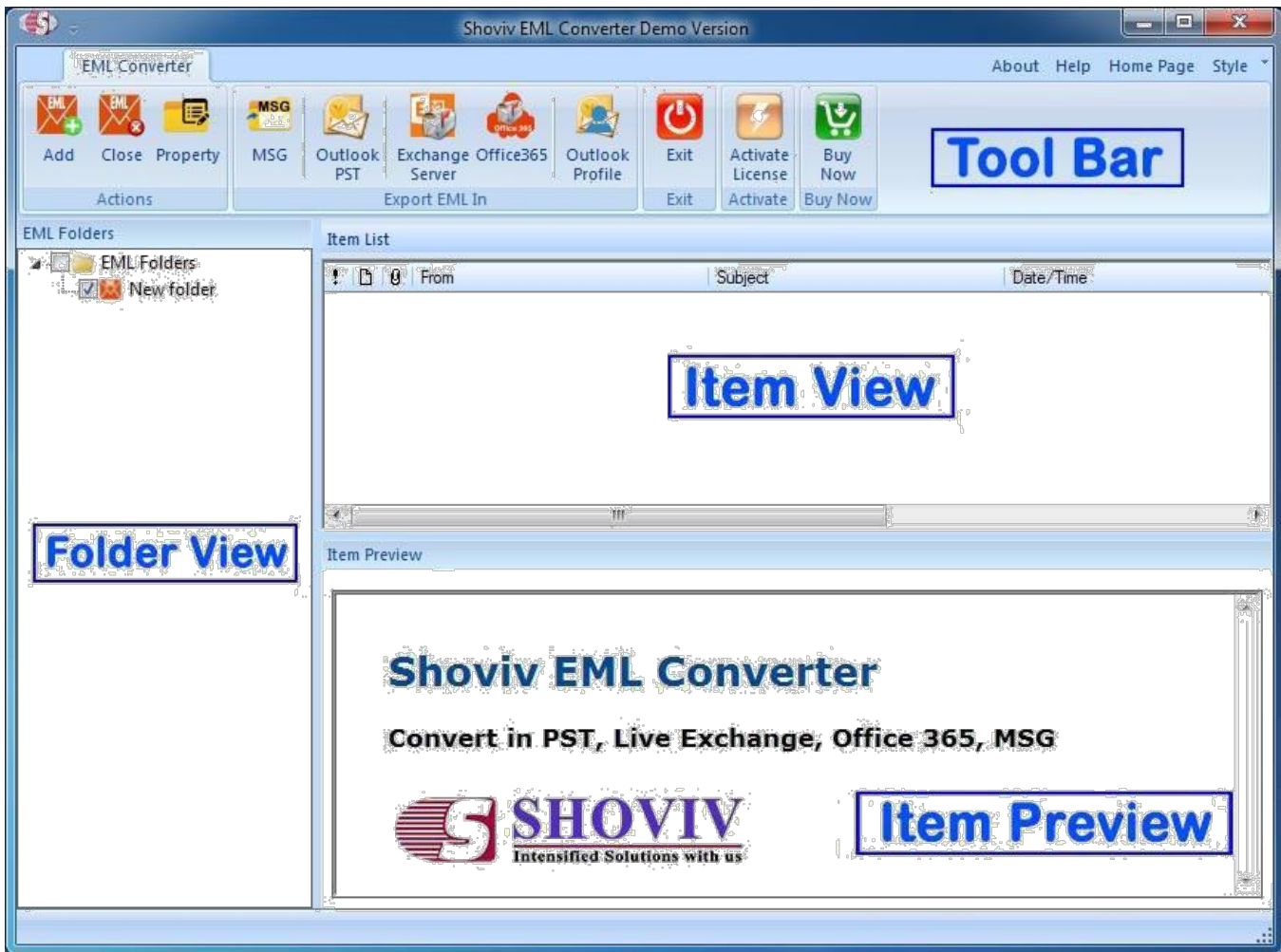
1. About Shoviv EML Converter
 - 1.1 Introduction
 - 1.2 Key Features
 - 1.3 System Requirements
2. Installation and Uninstallation
 - 2.1 Installation
 - 2.2 Uninstallation
3. Search EML Folder
 - 3.1 Search EML Folder
4. Export EML
 - 4.1 In MSG
 - 4.2 In Outlook PST
 - 4.3 In Live Exchange
 - 4.4 In Office365
 - 4.5 In Selected Profile
5. Help
 - 5.1 About EML
 - 5.2 Visit Home Page
6. Activation
 - 6.1 Activate License
7. Buy Now
 - 7.1 Buy Now
8. Legal Notice
 - 8.1 Copyright
 - 8.2 Trademarks
 - 8.3 Disclaimer
 - 8.4 License Agreement



Introduction to Shoviv EML Converter

Shoviv EML Converter Export EML Files to Outlook PST, Live Exchange Server and Office365 Mailbox, MSG and Selected Profile.

- Software supports to convert EML File (Associated with Microsoft Windows, Apple macOS / Mac OS X, Linux/Unix) to PST, MSG, Office365 , Live Exchange and Selected Profile.
- It allows to export EML message file to Outlook (PST) file.
- Software has excellent feature that helps to convert batch EML file into Outlook (PST), Office365 , Live Exchange & Selected Profile.
- Split resultant oversized PST file into smaller.
- Converts EML Message file with all attachment to different file (*.PST, *.MSG) formats.
- Export EML file to Live Exchange (Public Folder & Archive Mailbox).
- Export EML file to office365 (Public Folder & Archive Mailbox).
- Software has another ideal feature that allows creating new PST file at runtime and saving EML file items to PST format.
- Convert EML Message file to all editions of Outlook (PST) file.
- It is suitable or runs with all editions of Windows OS (including Windows 10).



User Interface of Shoviv EML Converter contain three sections

1. Folder View

- Display the path of EML Folder File(s).

2. Item View

- Display the items of EML folder(s).

3. Item Preview

- Display the item preview of selected item.



Key Features of Shoviv EML Converter

1. Convert EML Files to **MSG**.
2. Export EML Files to **Unicode or Non Unicode** PST of MS Outlook.
3. Export EML Files to **Live Exchange Mailbox, Public Folder & Archive Mailbox**.
4. Export EML Files to **Hosted Exchange Mailbox, Public Folder & Archive Mailbox**.
5. Export EML Files to **Office365 Mailbox, Public Folder & Archive Mailbox**.
6. Export EML Files to existing or new Outlook Profile which is created by users for any email clients (Exchange server, IMAP, POP3, GroupWise etc.) supported by Microsoft Outlook.
7. Software has another facility that allows user to Search EML File Folder.
8. Maintain Folder Hierarchy in case of export.
9. **Maintain All File Property** like Subject, From, To, Date and Attachment etc. in case of export.
10. Create Password protected PST files.
11. **Split PST** file according to your requirement (In GB or MB)after exporting EML File to PST File.
12. Filter Option – It is another best features of software to **Filter EML Files according to subject, from, and then export EML File** to *MSG,*PST, etc.
13. Facility to **preview the EML** File's before Exporting Files.
14. It has attractive GUI for technical or non-technical user.
15. It has very fast process to export Files form EML within few seconds.
16. It supports to works with **MS Outlook 2016** and lower versions (with 32 bit and 64 bit).
17. Runs with **Windows 10** and lower versions operating system (with 32 bit and 64 bit).



System Requirements

Support Desk

- Compatible with Windows Operating System– Support Windows 10/8.1/8/7/XP/Vista/2000 (both 32 & 64 bit) and Windows Server 2012, 2008 R2, 2008, 2003 R2 and 2003 versions.
- Compatible with MS Outlook – 2000, 2003, 2007, 2010, 2013, 2016 (both 32 and 64 bit) versions.

System Specification

- Hard Disk: 60 MB of Space of Hard Disk.
- Processor: 1 GHz Processor (2.4 GHz is recommended).
- RAM: 512 MB of RAM (1 GB is recommended).



Install The Software

To install the software first make sure that the software installer file is available on your computer. If the file is not available then you can download the file from our website - <https://www.shoviv.com>

Following are the steps to install the software.

- Double-click the Shoviv EML Converter installer file.
- Follow the instructions. When the installation process completes then setup install completion screen will be appears on the software installation screen.
- Click the Finish button to launch the software.

Uninstall The Software

There are two methods to Uninstall Shoviv EML Converter Software:

- Uninstall from Windows Start Menu
- Uninstall from Control Panel

Uninstall from Windows Start Menu

- Click Start -> All Programs -> Shoviv EML Converter Software -> Uninstall Shoviv EML Converter Software. A warning message will be displayed.
- Click the Yes button to continue uninstalling the Shoviv EML Converter Software.
The **“Shoviv EML Converter Software was successfully removed from your computer”** message will be displayed.
- Click the OK button to complete the Shoviv EML Converter Software un-installation process.

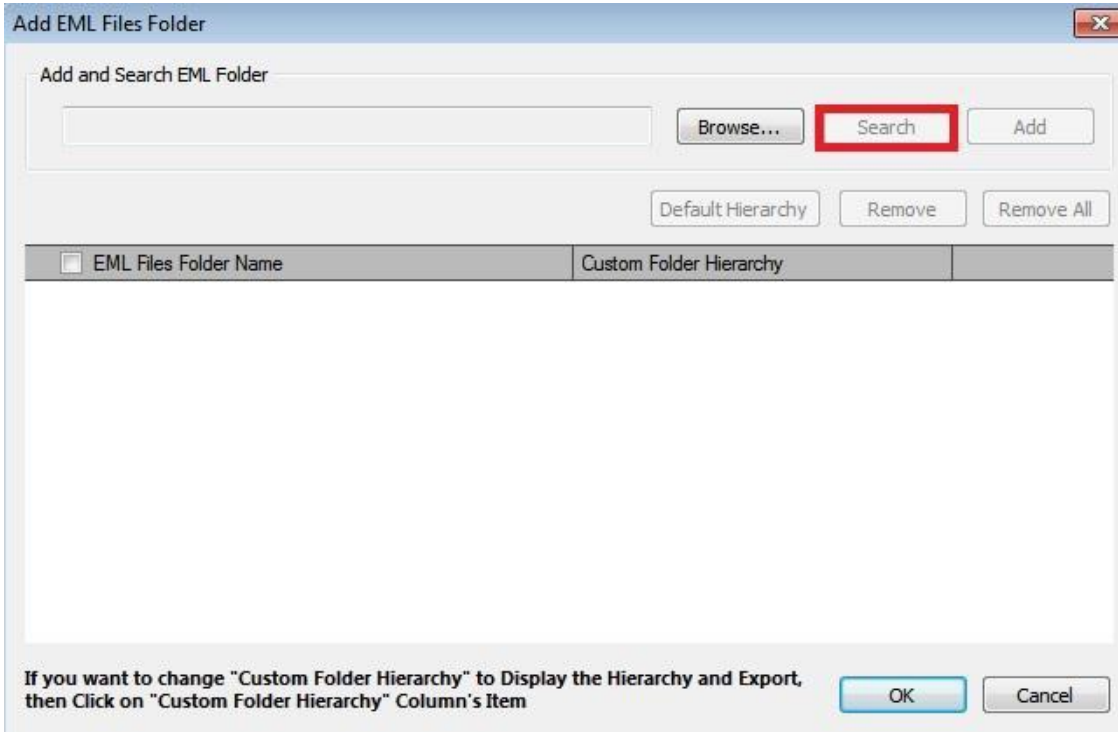
Uninstall from Control Panel

- Click Start -> Control Panel. The Control Panel window appears.
- Double-click the Add or Remove Programs icon. A list of the programs installed on your computer appears.
- Select Shoviv EML Converter Software and click the Remove button. A warning message will be displayed.
- Click the Yes button to continue uninstalling the Shoviv EML Converter Software.
“The Shoviv EML Converter Software was successfully removed from your computer” message will be displayed.
- Click the OK button to complete the Shoviv EML Converter Software un-installation process.

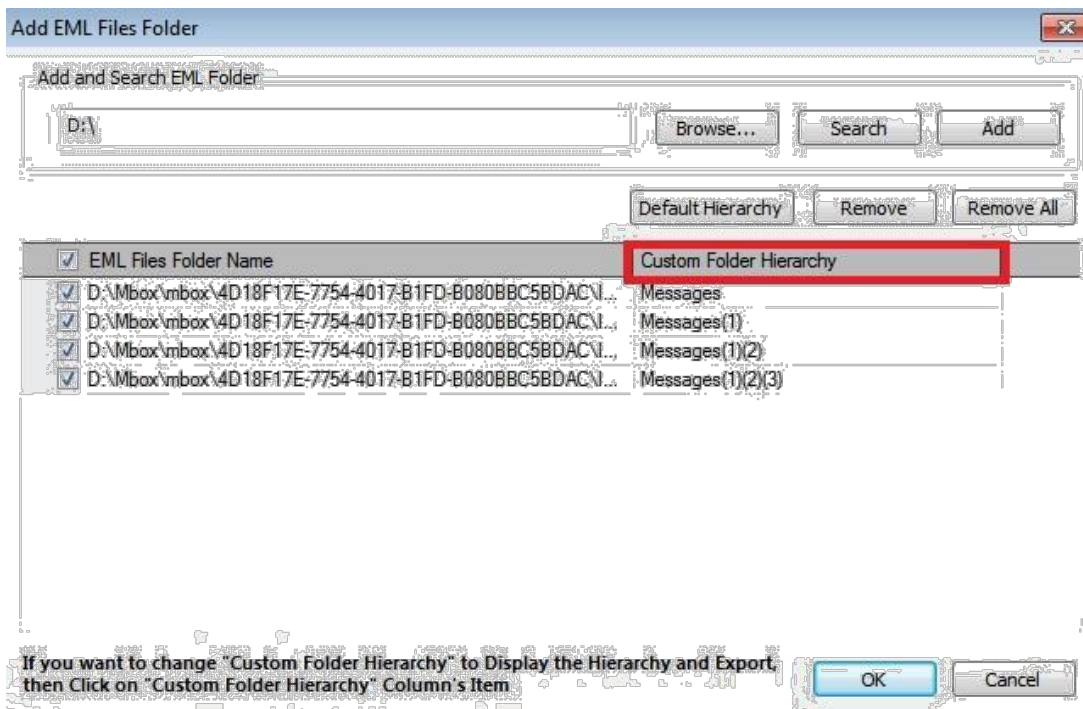


Search EML Folder

"**Search eml folder**" is an advanced feature which helps you to find EML files from the given folder location or from an entire disk drive. It appears in Add Eml dialog box.



"**Select the required EML File Folders**" by checking the checkbox or you can check all the files by "**CHECK ALL**" option, when the EML folder(s) get listed under the column EML File Folder.

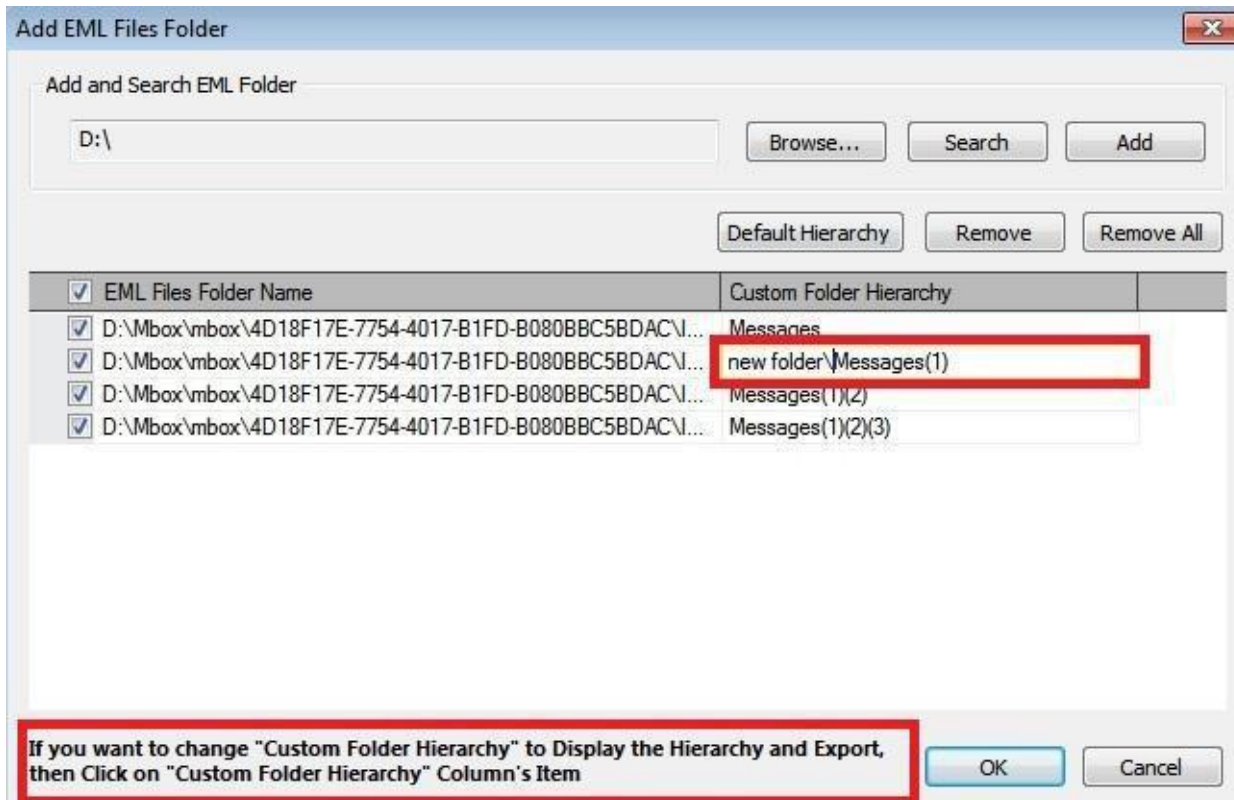




Shoviv EML Converter

The "**Custom folder hierarchy**" is the latest and advanced feature which will help you to create the new and easy hierarchy for your eml files. As it is known by name you can customise the folder output hierarchy and then view as well save into the give file formats or mailboxes.

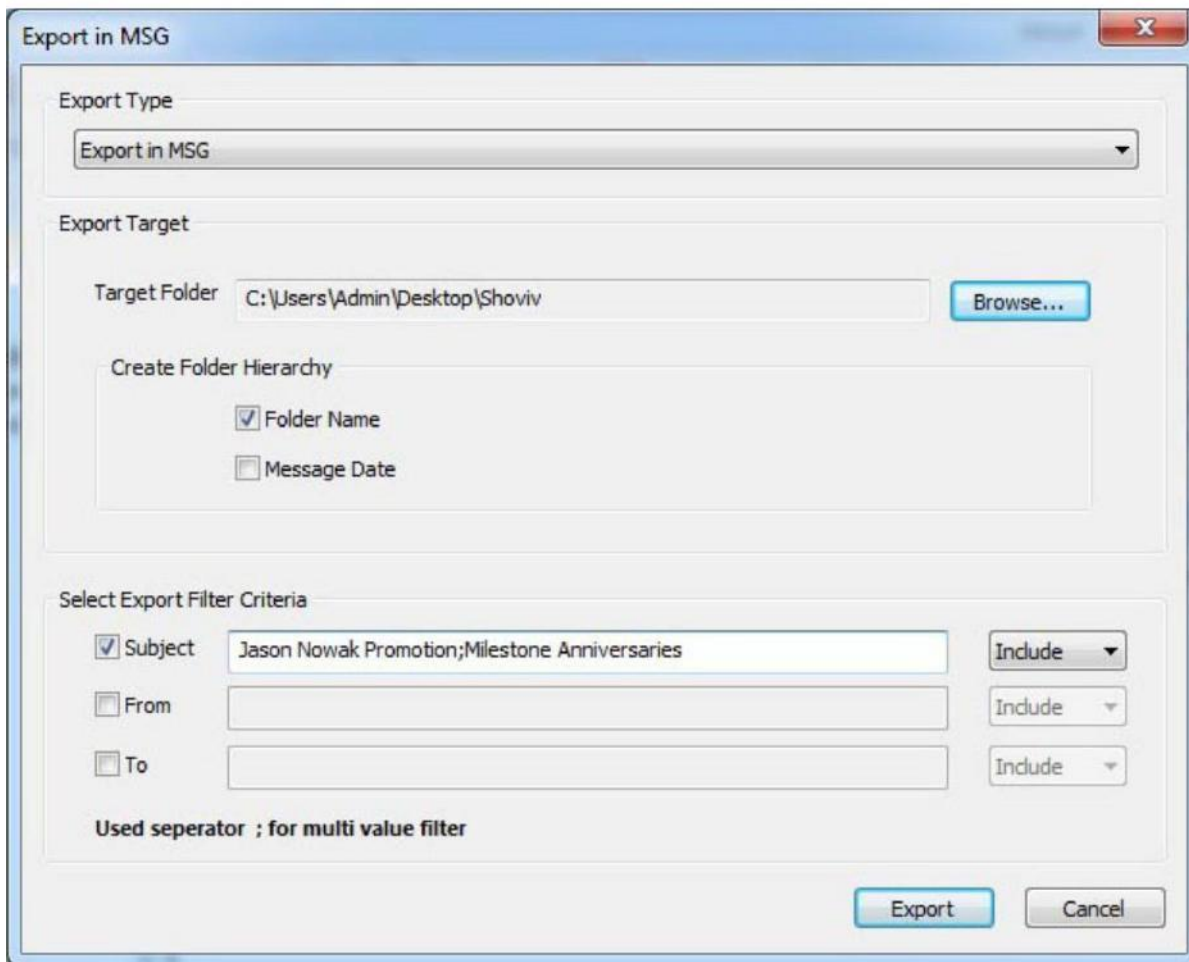
to customise folder hierarchy all you need to do is insert prefix or postfix the folder hierarchy from the list of the custom folder hierarchy.





Export Item in MSG

If you want to export selected EML Folder/File to MSG then click on export button of toolbar or go to the file menu and click on export mailbox option then a dialogue will pop up as shown below.



In export Item dialogue click on MSG option.



Export Target: In this section you can select export target folder and folder hierarchy option. Description is given below.

- **Target Folder:** Select the target folder using browse button where you want export EML item to MSG.
- **Create Folder Hierarchy by Message Date:** If you want to create folder hierarchy according to EML item date then select this option.

Folder Hierarchy Level

- By selecting the Folder Hierarchy Level we can reduce the Eml file's folder hierarchy in Target folder.
- Hierarchy level create folder hierarchy in Target folder from the right side of the Eml file's folder.

Select Export Filter Criteria: In this section you can select item filter criteria. Description is given below.

- **Subject:** If you want to export only those Items which has specific subject then check "**Subject**" option and enter subject name in edit box.
- **From:** If you want to export only those Items which has specific sender name or sender email then check "**From**" option.
- **To:** If you want to export specific name for the message recipient then select "**To**" option.

Is Exclude: If you want to exclude these item then select "**Is Exclude**" option.

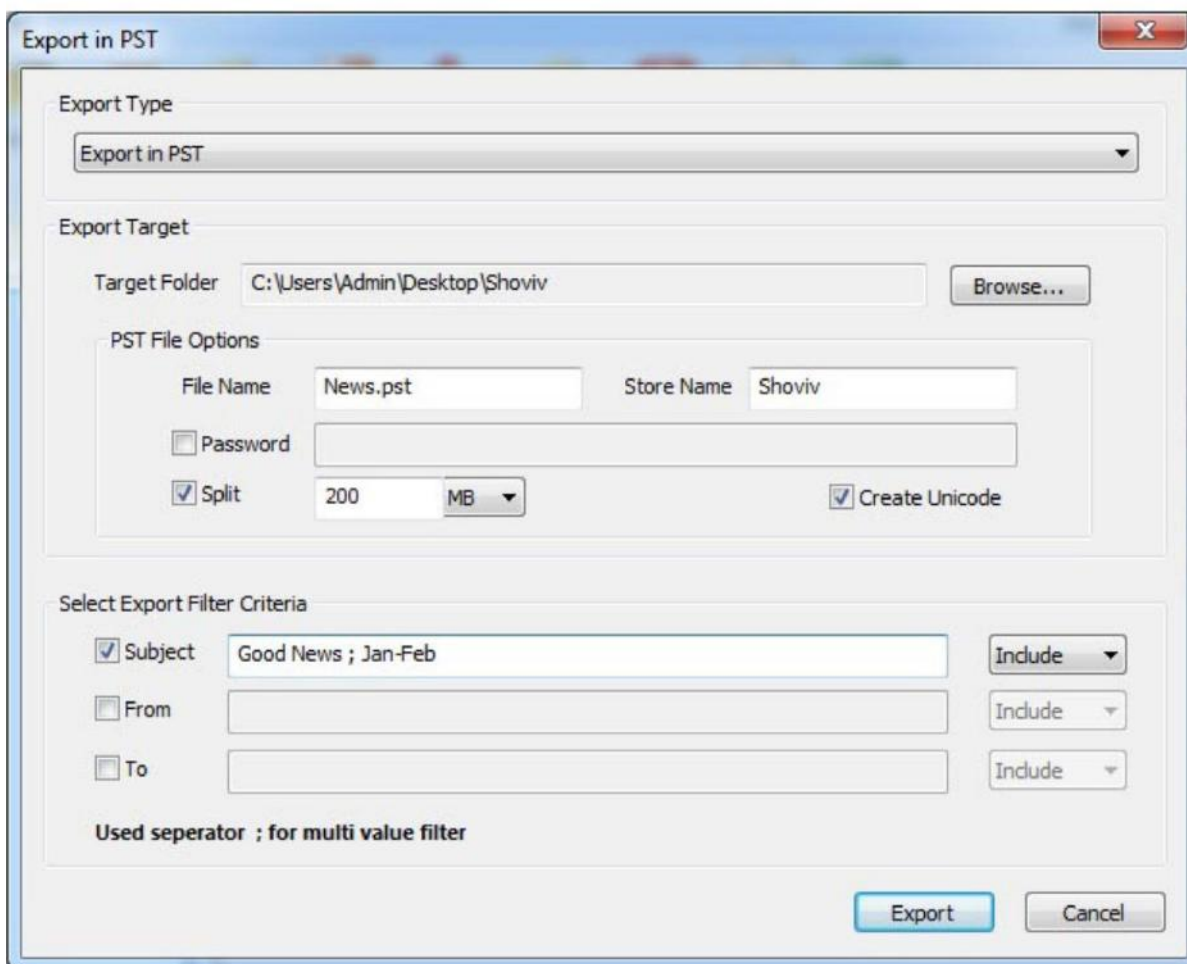
Note: If you want to filter more then one Subject, From and To then use semicolne(;) for multivalue filter.

Export: After enter all value click on export button then a progress bar appears on this dialogue and export process will be start.



Export Item in Outlook PST

If you want to export selected EML Folder/File to outlook PST then click on export button of toolbar or go to the file menu and click on export mailbox option then a dialogue will pop up as shown below.



In export Item dialogue click on outlook PST option.



Export Type : Choose in which file format you want to export your Eml files.

Export Target: In this section you can select export target folder and folder hierarchy option. Description is given below.

- **Target Folder:** Select the target folder using browse button where you want export EML item to PST.
- **File Name:** Enter the PST file name which you want to create in selected target folder. If the enter PST file name all ready exists in target folder then software automacially add sofix one at last in enter file name.
- **Store Name:** In store name edit box enter the name for given PST file.
- **Is PST Password Protected:** If you want to create password protected PST then check "**Is PST Password Protected**" check box. and enter password for the PST.
- **Split PST File Size After:** If you want to create more then one PST file according to size then check "**Split PST File Size After**" check box and enter the PST file size in GB or MB.
- **Create Unicode PST:** If you want to create Unicode PST then check "**Create Unicode PST**" check box.

Select Export Filter Criteria: In this section you can select item filter criteria. Description is given below.

- **Subject:** If you want export only those Items which has specific subject then check "**Subject**" option and enter subject name in edit box.
- **From:** If you want export only those Items which has specific sender name or sender email then check "**From**" option.
- **To:** If you want to export specific name for the message recipient then select "**To**" option.

Is Exclude: If you want to exclude these item then select "**Is Exclude**" option.

Note: If you want to filter more then one Subject, From and To then use semicolne(;) for multivalue filter.

Export: After enter all value click on export button then a progress bar appears on this dialogue and export process will be start.



Export Items

1. Live Exchange Mailbox : If you want to export selected EML Folder/File to Live Exchange then click on the export button on the toolbar then a dialogue will pop up as shown below.



Export in Exchange Server

Export Type
Export in Exchange Server

Export Target

Exchange Name:

Mailbox Name:

Is Hosted Exchange Password:

Export In

Mailbox Public Folder Archive Mailbox

Select Export Filter Criteria

Subject Include

From Include

To Include

Used seperator ; for multi value filter

Export Cancel



In export Item dialogue click on Live Exchange option.

Export Type : Choose in which file format you want to export your Eml files.

Export Target : In this section, you need to input target details.

- **Exchange Name :** Enter the exchange name.
- **Mailbox Name :** Enter the address of exchange target mailbox.
- **Is Hosted Exchange :** If Exchange is hosted then check this option.
- **Password :** Enter the password of hosted mailbox.

Export In : Choose the mailbox location.

- Mailbox
- Public Folder
- Archive Mailbox

Select Export Filter Criteria: In this section you can select item filter criteria.

Description is given below.

- **Subject:** If you want export only those Items which has specific subject then check "**Subject**" option and enter subject name in edit box.
- **From:** If you want export only those Items which has specific sender name or sender email then check "**From**" option.
- **To:** If you want to export specific name for the message recipient then select "**To**" option.

Is Exclude: If you want to exclude these item then select "**Is Exclude**" option.

Note: If you want to filter more then one Subject, From and To then use semicolne(;) for multivalued filter.

Export: After enter all value click on export button then a progress bar appears on this dialogue and export process will be start.

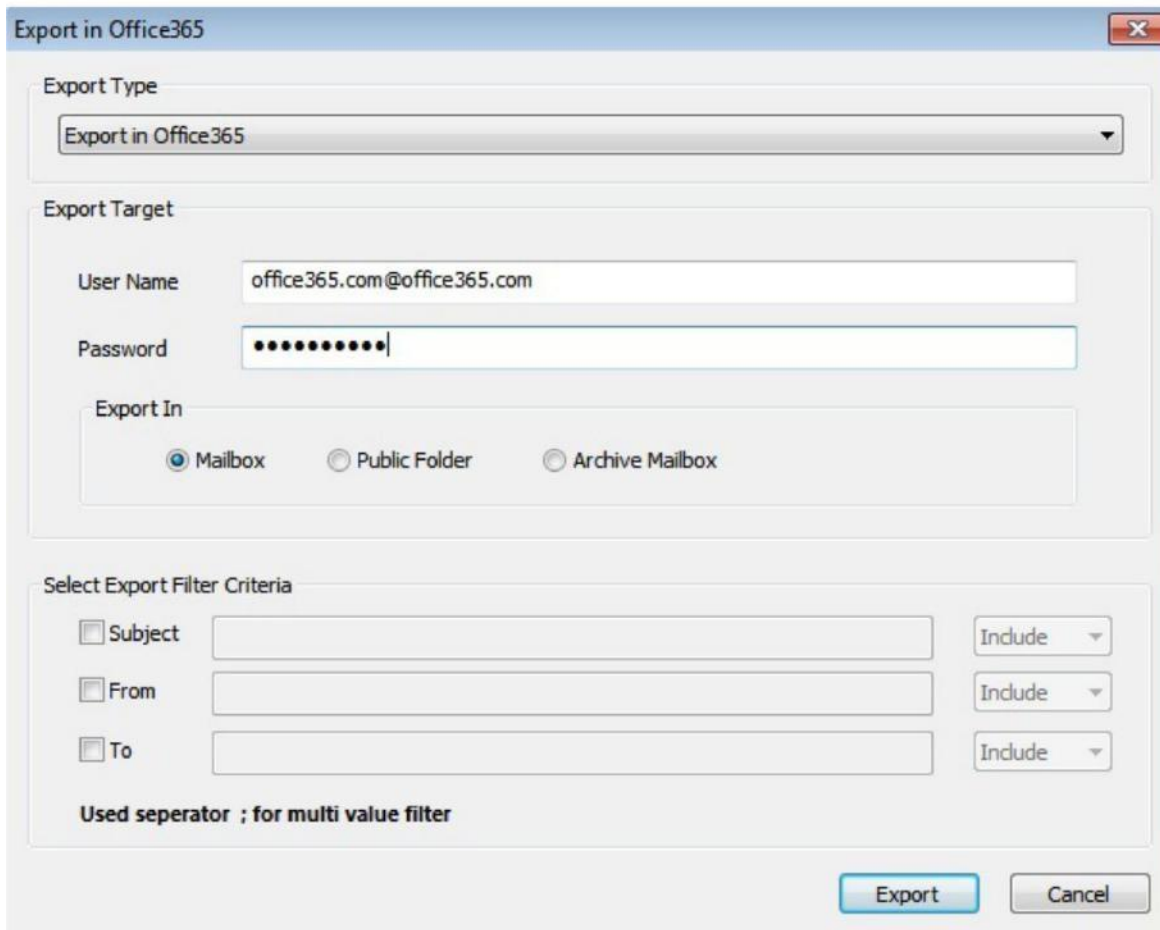
2. Export in Live Exchange Public Folder: If you want to export selected EML Folder/File to Live Exchange Public folder then select live exchange public folder option from combo box.

3. Export in Live Exchange Archive Mailbox: If you want to export selected EML Folder/File to Live Exchange Archive Mailbox then select live exchange Archive Mailbox option from combo box.



Export Items

1. **Export in Office365 Mailbox** : If you want to export selected EML Folder/File to Office365 then click on export button of toolbar or go to the file menu and click on export mailbox option then a dialogue will pop up as shown below.





Export Type : Choose in which file format you want to export your Eml files.

Export Target: In this section you can select export target folder and folder hierarchy option. Description is given below.

- **User Name:** In User Name edit box enter the office365 user name.
- **Password:** In Password edit box enter the password.

Export In : Choose the mailbox location.

- Mailbox
- Public Folder
- Archive Mailbox

Select Export Filter Criteria: In this section you can select item filter criteria. Description is given below.

- **Subject:** If you want export only those Items which has specific subject then check "**Subject**" option and enter subject name in edit box.
- **From:** If you want export only those Items which has specific sender name or sender email then check "**From**" option.
- **To:** If you want to export specific name for the message recipient then select "**To**" option.

Is Exclude: If you want to exclude these item then select "**Is Exclude**" option.

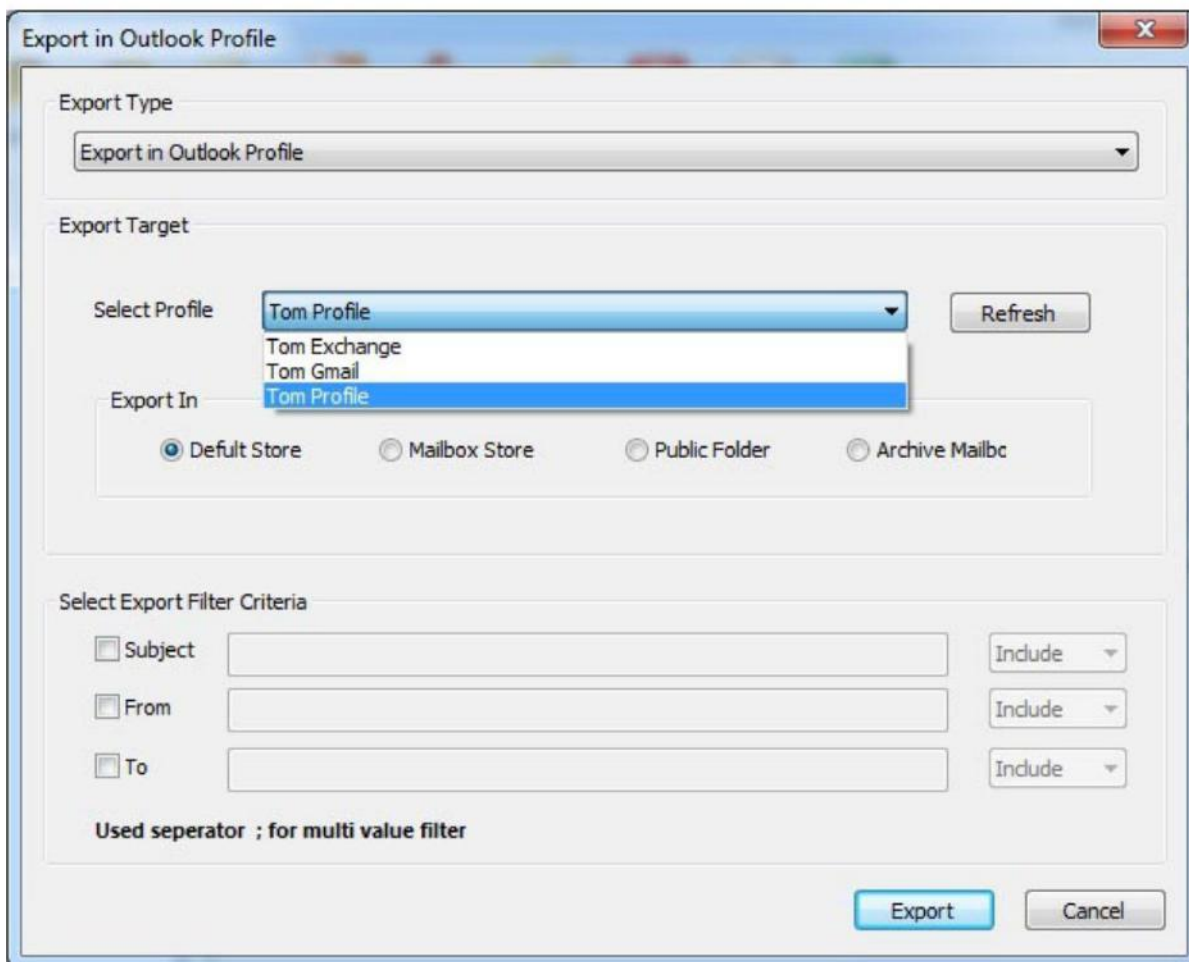
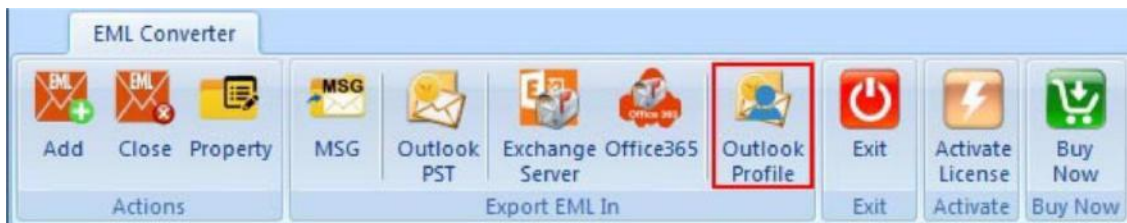
Note: If you want to filter more then one Subject, From and To then use semicolne(;) for multivalue filter.

Export: After enter all value click on export button then a progress bar appears on this dialogue and export process will be start.



Export In Selected Profile

If you want to export selected EML Folder/File to Selected Profile then click on export button of toolbar or go to the file menu and click on export mailbox option then a dialogue will pop up as shown below.





In export Item dialogue click on **Selected Profile** option.

If you want to export EML data to any other mail client which mail client profile is properly configure in outlook like mail client, POP, IMAP, Live Exchange GroupWise etc.

Export Type : Choose in which file format you want to export your Eml files.

Select Export Filter Criteria : In this section you can select item filter criteria. Description is given below.

- **Subject**: If you want export only those Items which has specific subject then check "**Subject**" option and enter subject name in edit box.
- **From**: If you want export only those Items which has specific sender name or sender email then check "**From**" option.
- **To**: If you want to export specific name for the message recipient then select "**To**" option.

Is Exclude: If you want to exclude these item then select "**Is Exclude**" option.

Note: If you want to filter more then one Subject, From and To then use semicolne(;) for multivalue filter.

Export: After enter all value click on export button then a progress bar appears on this dialogue and export process will be start.



About EML Converter

More effective version 17.10 of Shoviv EML Converter has arrived, embedded with new features and look. Shoviv EML Converter allows you to convert EML file. The software reads the EML file in a widespread way and then draw out emails, related attachments of the emails.

If you want to see website then click on : <https://www.shoviv.com/>

If you have any problem about software then you can contact :
support@shoviv.com

And if you have any problem about sales then you can contact :
sales@shoviv.com



The Shoviv EML Converter is fully functional and helps about the capability and accuracy of the software. You can download the trial version of Shoviv EML Converter to visit the website click on <https://www.shoviv.com>.



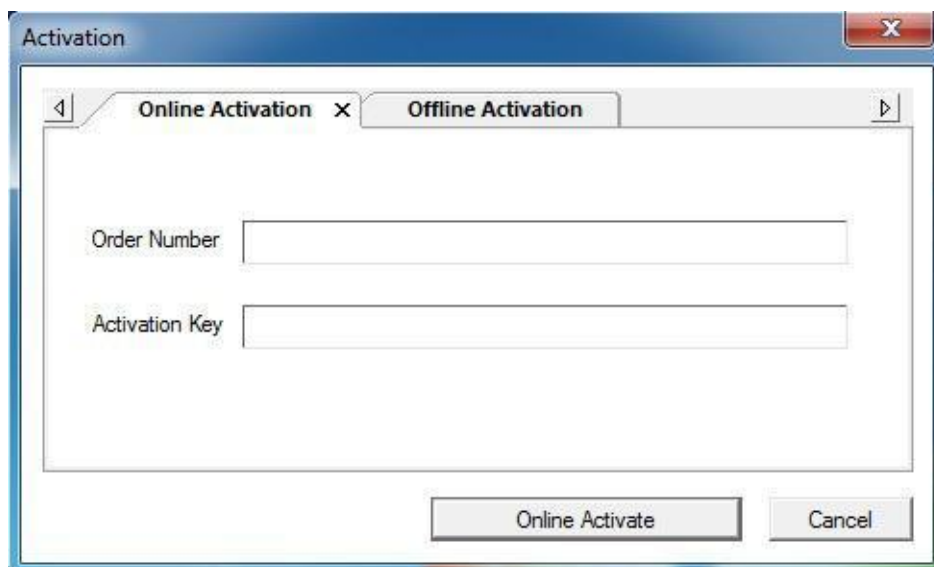
Activate License



Activation - You can activate Shoviv product by two methods.

1. **Online Activation**
2. **Offline Activation**

1. Online Activation



When purchase or buy to Shoviv product/software then you will receive an email. Which will have an order number and activation key. By using this option you can activate this product online.

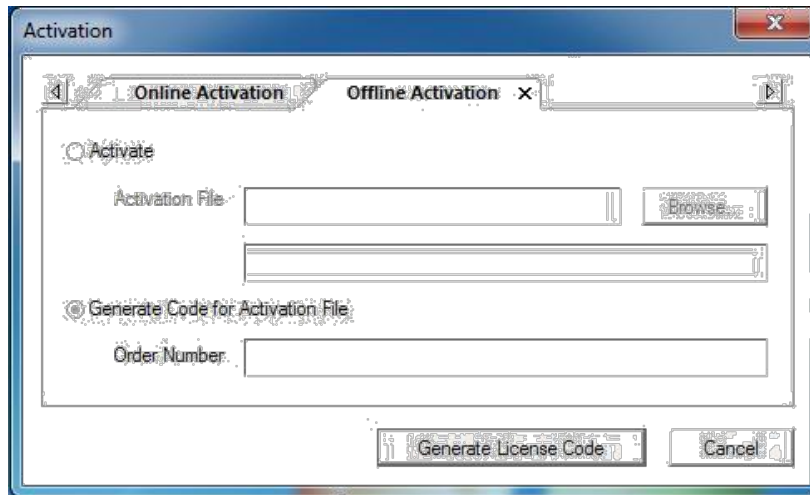
02. Offline Activation

If online activation failed or due to some technical reason you aren't abling to activate product then you can use offline activation method. Offline activation has two steps.

1. **Generate Code for activation file**
2. **Activate**

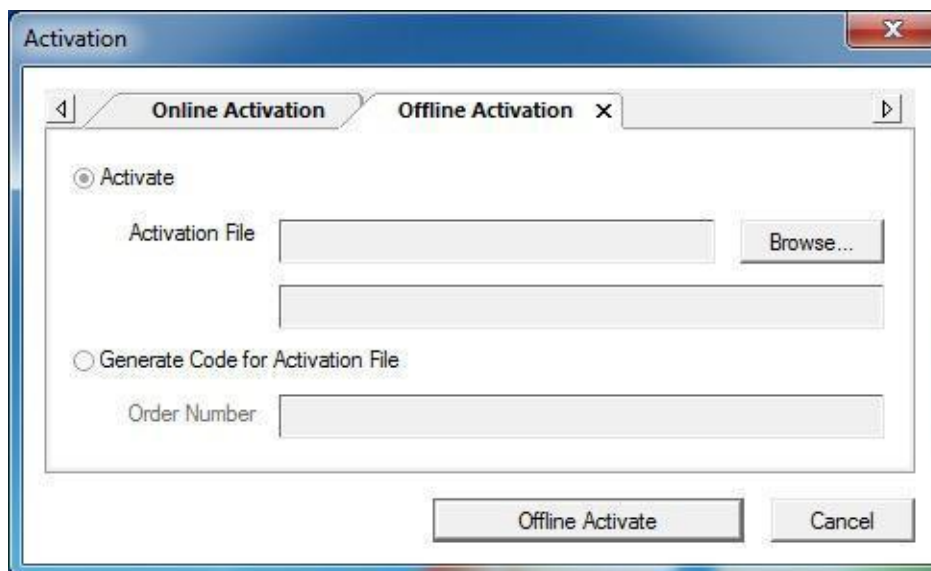


01. Generate Code for activation file



You need to enter order number in order number field and then click on generate license code button. a text file will generate on your desktop, you need to send that file to sales@shoviv.com by using this file we will generate activation file and send it to you on your registered email address within few minutes after receiving email/request.

02. Activate



After receiving activation file sent by Shoviv Software Pvt. Ltd. all you need to do is go to offline activation and browse activation file and hit the Offline Activate button.



Buy Now

Demo version allows to freely exporting items from EML file but only up to 25 items per folder. Full versions of the software export entire EML items without any data loss.

You can purchase the software through Shoviv Software website: <http://www.shoviv.com>

For any other details related to purchase process, software activation process, email us at: sales@shoviv.com

Copyright Notice

Shoviv EML Converter, accompanied user manual, and documentation are copyright of Shoviv Software Pvt. Ltd. with all rights reserved. Under the copyright laws, this user manual cannot be reproduced in any form without the prior written permission of Shoviv Software Pvt. Ltd. No Patent Liability is assumed, however, with respect to the use of the information contained herein.

© Shoviv Software Pvt. Ltd. All rights reserved.



Trademarks

Shoviv ® is a copyright work of **Shoviv Software Pvt. Ltd.**

Windows 95®, Windows 98®, Windows ME®, Windows NT®, Windows 2000 Server®, Windows 2000 Advanced Server®, Windows 2003 Server®, MS Word® and Windows XP® are registered trademarks of Microsoft Corporation.

All other brand and product names are trademarks or registered trademarks of their respective companies.

Disclaimer

The Information contained in this manual, including but not limited to any product specifications, is subject to change without notice. Shoviv Software Pvt. Ltd. provides no warranty with regard to this manual or any other information contained herein and here by expressly disclaims any implied warranties of merchantability or fitness for any particular purpose with regard to any of the foregoing. Shoviv Software Pvt. Ltd. assumes no liability for any damages incurred directly or indirectly from any technical or typographical errors or omissions contained herein or for discrepancies between the product and the manual. In no event shall Shoviv Software Pvt. Ltd. , be liable for any incidental, consequential special, or exemplary damages, whether based on tort, contract or otherwise, arising out of or in connection with this manual or any other information contained herein or the use there of.



License Agreement

Shoviv EML Converter Copyright © Shoviv Software Pvt. Ltd. All rights reserved.

Your agreement to this license

It is a legal agreement between you and Shoviv software Pvt. Ltd. Term and conditions of the License will brief you the authorized use and users of each licensed copy of the Shoviv EML Converter.

Term and conditions are mandatory to accept for become an authorized user, if you do not agree with the Term and conditions then do not copy, install, distribute or use any copy of Shoviv EML Converter.

Term and conditions:

You should read the term and conditions carefully before use, install, and copy or distribute the software.

Scope of License

You can use only permitted copy of the software.

Single workstation program

This term refers to a program installed and used only by a single user on a single computer at a time. The Program must not be installed, distributed, shared or used on multiple computers.

Multiple workstation programs

This term refers to a program installed, used, specified no. of computer at a time. Program must not be installed, shared, distribute or used by no. of computers exceed to the authorized limit.

Multimedia File Authorization

The Publisher and licensor reserve all cerebral asset's rights associated to multimedia files that may be given with the program images, audio, video files. License holder can use this file only for personal purpose excluding commercial or any other intended purpose.



Shoviv EML Converter

Authorization

Shoviv EML Converter includes an advance feature to protect it against an unauthorized reproduction. You can make only one copy for backup and contained purpose; you cannot make more than the authorized copies of the Shoviv EML Converter.

Activation

To activate the Shoviv EML Converter we provide you an Online Activation key and Order number in purchase package, if you face any problem in online activation than we will provide you an offline activation key on request. The Online and offline Activation key is the Publisher's exclusive asset that it is strictly confidential information and must not be shareable with third party. The user commit for the protection of confidentiality of activation key.

Restrictions

All rights are reserved and are not granted in this license. You cannot lease, modify, translate, reverse engineer, decompile, disassemble or get the source code of software.

Legality statement

The program which is licensed to you is absolutely legal and you are the legal owner of the entire file or data you are going to recover through using this software .You have the permission from legitimate owner to perform these acts.

Any illegal use of Shoviv EML Converter will be solely your responsibility.

You further attest that recovered data, password or files will not be used for any illegal purpose.

Be aware that password recovery, unauthorized data encryption, illegally obtained file may constitute theft or other wrongful action may result in your civil and criminal prosecution.

About

The license is the complete statement of concurrence between the parties on the subject matter and joins and replaces all other prior understandings, purchase orders, agreement and arrangements. Shoviv software Pvt. Ltd. does not give any benefit to third party and is not responsible for any obligations created by the party. Shoviv Software Pvt. Ltd. will not give you any waiver on violation of this License and you shall neither constitute nor contribute to a waiver.

Copyright © Shoviv Software Pvt. Ltd. All Rights of any kind are reserved by the Shoviv Software Pvt. Ltd. and are not expressly granted in License.

